



# PRO)))SOUND™

Room acoustic Treatment systems

## Acoustic Wall Panels

ProSound acoustic wall panels are a high quality sound absorption panel designed to control reverberant noise and echo in areas with hard surfaces.

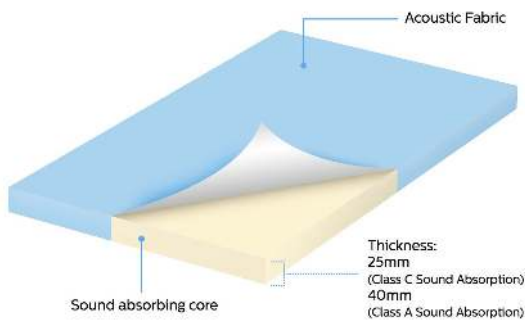
the  
**soundproofing**  
store

[Request a Quote](#)

[Buy Online](#)

[www.soundproofingstore.co.uk](http://www.soundproofingstore.co.uk)  
[sales@soundproofingstore.co.uk](mailto:sales@soundproofingstore.co.uk)

01423 206208



### ProSound Wall Panel Advantages

- Outstanding Sound absorption performance—Class A and Class C
- Over 90 Standard fabric colours to choose from
- Prefinished in acoustic fabric ready to install
- High impact resistance for use in sports areas
- High content or recyclable material
- Easy installation method—No specialist tools
- Installed without additional trims needed for the edging of the panel as the fabric is fully wrapped on all 4 edges

### Application

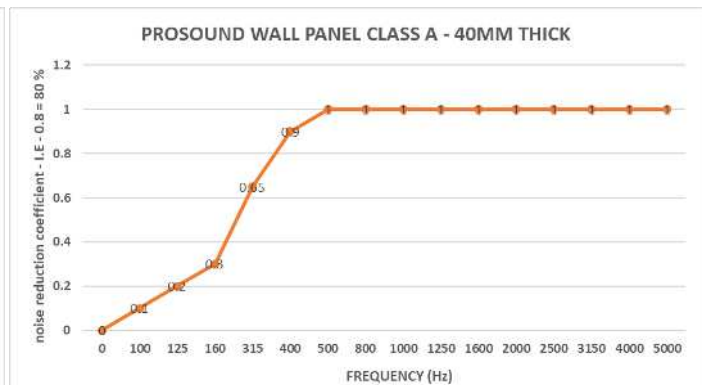
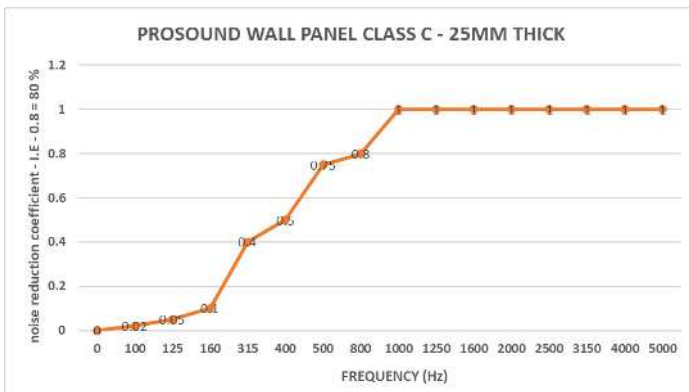
ProSound™ wall panels are high performing, sound absorbing wall panel ideal for acoustic room treatment. They are designed to reduce reverberation and reflection of sound within rooms.

ProSound™ wall panels are not only an excellent absorption materials but are designed to look great, giving you the ability to use the panels as part of your internal design and decor. They are, available in many colours, shapes and sizes.

ProSound™ wall panels are used to reduce reverberation noise levels in buildings such as studios, lecture theatres, music rooms, offices, boardrooms, sports and community halls, cinemas, interview rooms and can also be used to meet BB93 regulations for reducing reverberation in school classrooms. ProSound™ panels transform a stark, echoing area into a warm, quieter, congenial work place.



### Sound Absorption acoustic performance



Noise reduction coefficient — I.E 0.8 = 80% of that sound frequency (Hz)

ProSound™ Wall panels come in two standard thicknesses, 25mm (Class C) and 40mm (Class A). We have a selection of standard sizes however we can make panels to order for any size, shape and colour specification. The above graphs show the performance difference between the 40mm thick and the 25mm thick wall panels.



#### Weight

25mm wall panels weigh approx. 3.5kg/m<sup>2</sup>

40mm wall panels weigh approx. 4.5kg/m<sup>2</sup>



#### Fire Resistance

All of our standard panel fabrics are 'Class 1' for the Surface Spread of Flame in accordance with BS 476-7. ProSound™ Panel Core Board is rated 'Class O'. 'Class O' covering fabrics are also available upon request.



#### Cleaning

Light dirt marks can be removed by using proprietary spot cleaner. A small area should be tested first before doing the full panel to ensure that the fabric will not discolour from the cleaner.

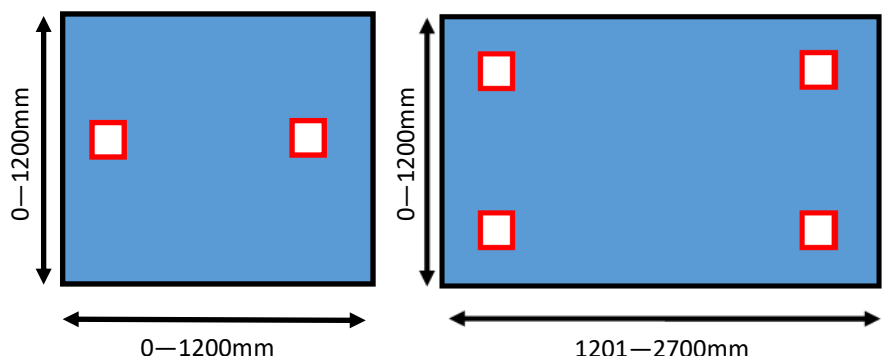


#### What's included

We supply the correct thickness and required quantities of impaling clips with your order whatever the thickness. All you need to do is buy the contact adhesive which we sell separately. ProSound Bonding adhesive has a average coverage of 5m<sup>2</sup>.

We recommend using the following number of impaling clips for the appropriate panel sizes but you can use more if you wish.

The panels is simply fixed to the wall using an impaling clip and a High tack adhesive. This allows for easy installation whether it is concrete, masonry, wood or metal. The impaling clips are available in a variety of depths to accommodate all thicknesses of wall panel.



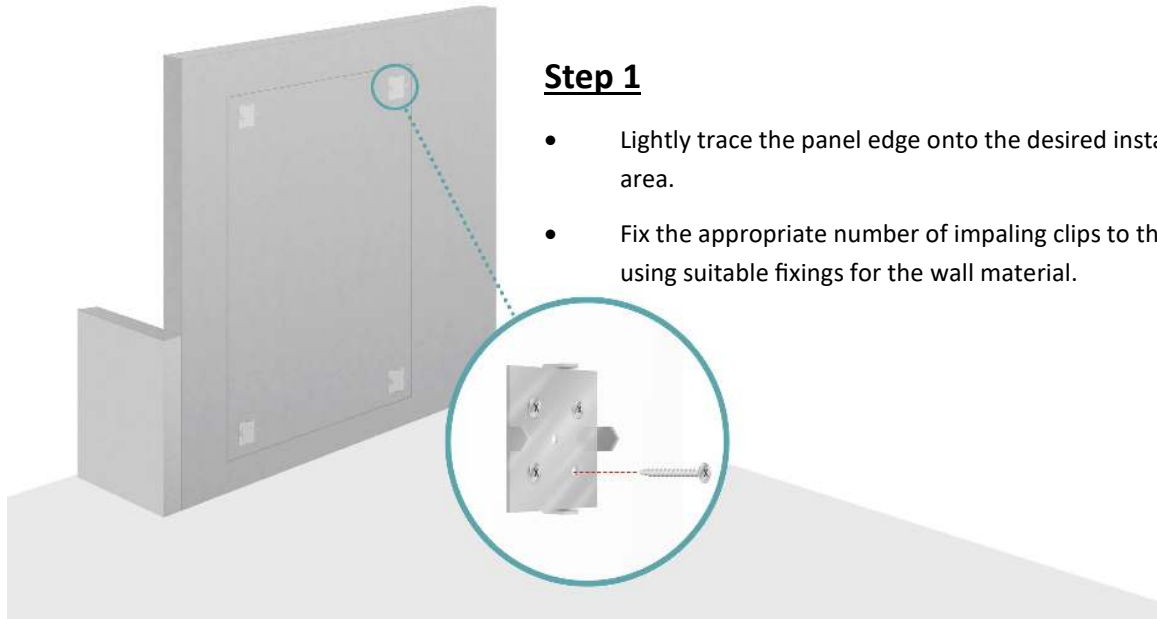


### Installation

ProSound wall panels are simply installed to begin you need to ensure all wall surfaces to which the panels are being applied to are clean and dry. Wall paper should be removed, gloss painted roughened and emulsion paint brushed with a stiff brush.

**Note :** Panels MUST be checked for colour shading differences, flaws, defects or damage prior to installation.

Once installation has been commenced, the panels are deemed to have arrived in perfect condition and any reported problems after installation will not be covered by your warranty.

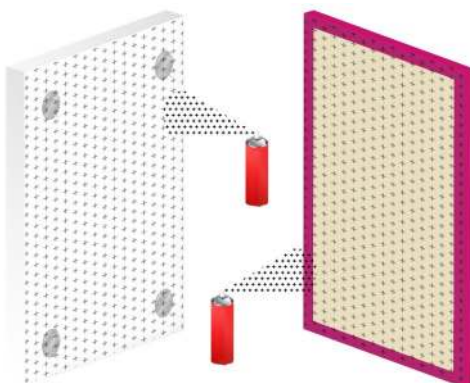


### Step 1

- Lightly trace the panel edge onto the desired installation area.
- Fix the appropriate number of impaling clips to the surface using suitable fixings for the wall material.

### Step 2

- Spray contact adhesive vertically onto the panels reverse surface and horizontally on to the desired installation area. Be sure to spray over the clips too.
- **\* contact adhesive should be applied to 100% of both surfaces \***

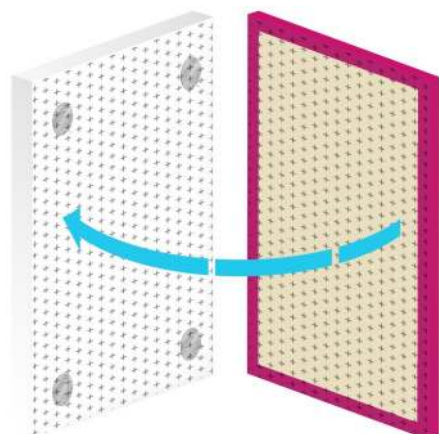


### Step 3

Wait 2-5 minutes for adhesive to dry slightly.

Carefully align the panel to the marked area and push gently against the impaling clips allowing them to bite in to the panel.

Once you are confident the panel is positioned correctly press firmly over the entire surface pushing the panel against the wall area. Ensure maximum contact has been made between the panel and the wall.



Our standard cost includes the panels made in any of the below materials and colours

### Cara



### Lucia

