



PRO))) SOUND™

Room acoustic Treatment systems

Simple Acoustic Panel Range

ProSound Simple acoustic panels are a high quality sound absorption panel used to control reverberation and echo in areas with hard surfaces.

the
soundproofing
store

[Request a Quote](#)

[Buy Online](#)

www.soundproofingstore.co.uk

sales@soundproofingstore.co.uk

01423 206208

ProSound Simple Range Advantages

- Outstanding Sound absorption performance—Class A
- Prefinished in white speckled spray paint finish
- Versatile application
- Easy installation—No specialist tools
- Quick lead time
- Installed without additional trims needed for the edging of the panel



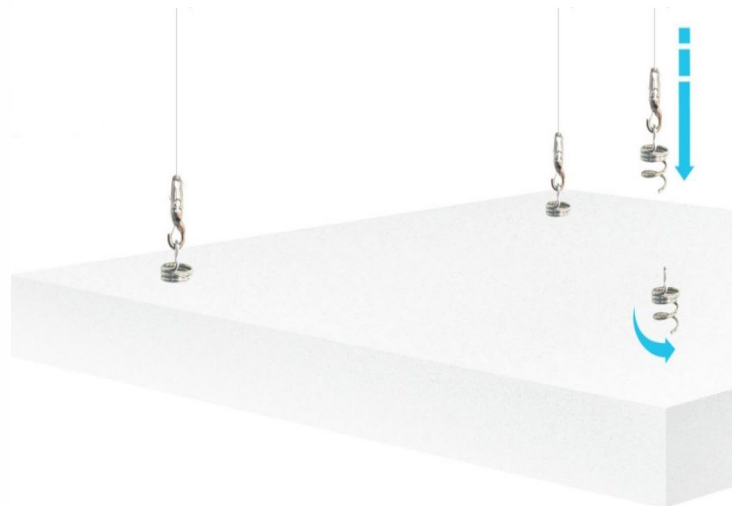
Application

ProSound™ Simple panels are a 40mm thick panel designed for reducing reverberation and echo within a space.

The panels are not only an excellent absorption materials but are designed to look great and sleek so you don't have to sacrifice style within your space.

The panels are commonly used in areas such as community halls, schools, offices, village halls, class rooms, church halls, restaurants and hospitals.

This versatile product can be fitted in a variety of ways. Either suspended from the ceiling as a Raft or Baffle or fixed directly to a wall.



Simple Range Options — Ceiling Rafts



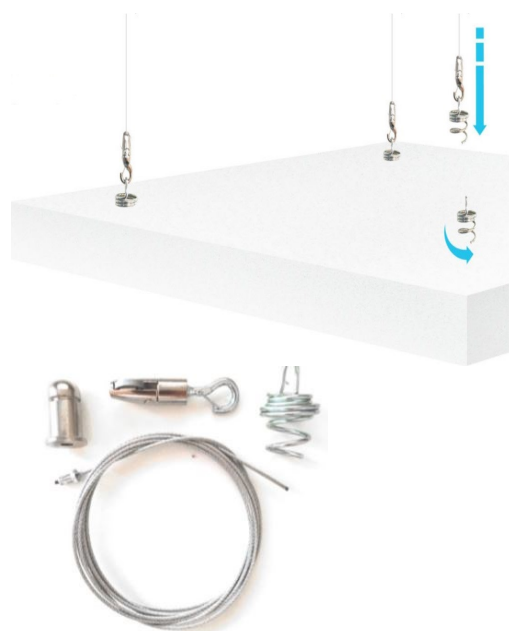
Installation

The installation time for our Simple range panels as a ceiling Raft is quick and easy.

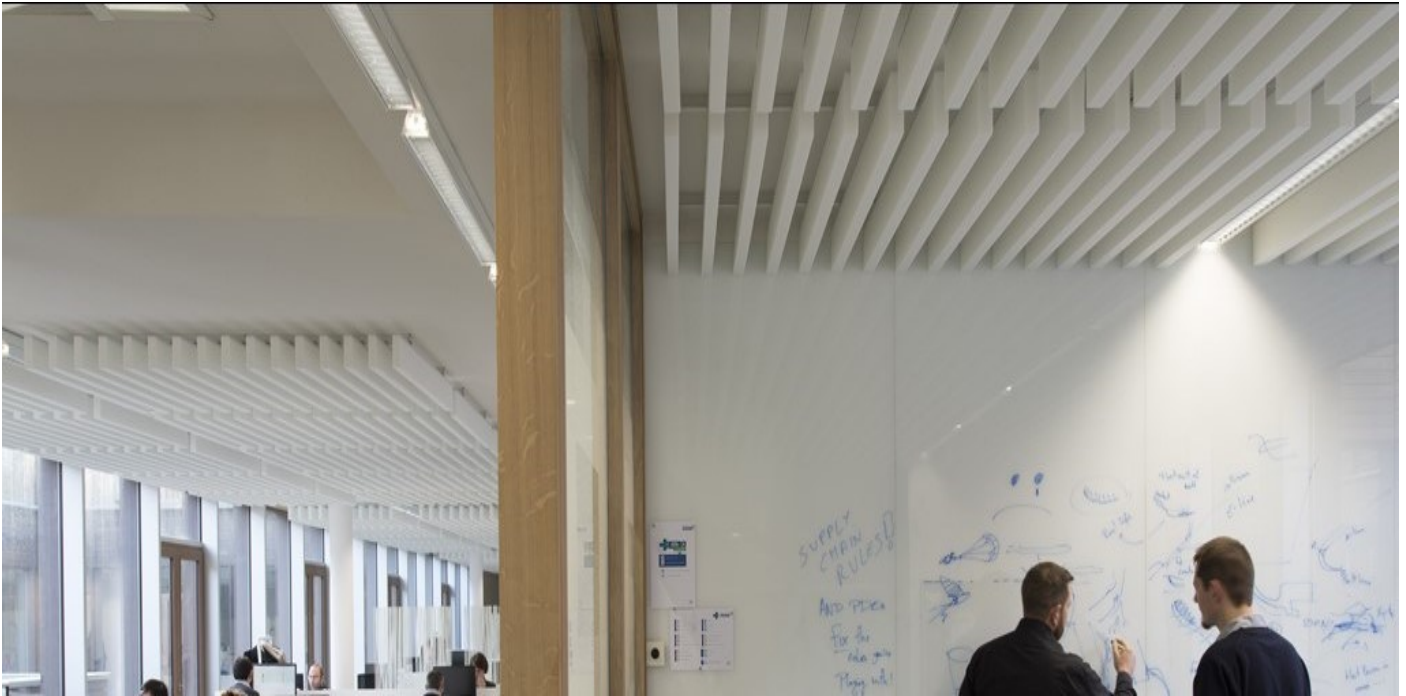
In fact, it does not require a specialist fitter to carry out the installation. The acoustic rafts are simply suspended by steel cables from the soffit by means of special spiral hooks which are fitted into the reverse of the raft by means of clockwise rotation.

Height level adjustment can be carried out by manipulating the length of each cable to suit when it is inserted into the eyelet hook. ProSound Simple Rafts can be set at an angle if required to increase design and aesthetic properties.

The spiral hooks should be placed approx. 200mm in from the edge of the Raft



Simple Range Options — Ceiling Baffle



Installation

The installation method for our Simple range panels as a baffle is easy and quick.

In fact, it does not require a specialist fitter to carry out the installation.

Each Pro/sound simple baffle will be supplied with 2 suspension kits.

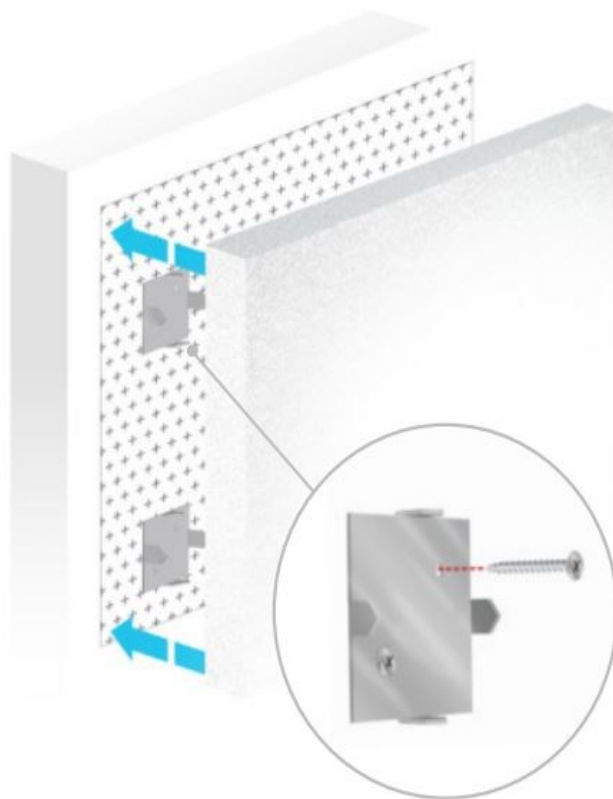
The spiral hooks should be inserted approx. 150mm from the edge of the baffle. These should be cork screwed into the edge of the baffle, making sure the spiral does not appear on the face of the baffle.

Height level adjustment can be carried out by manipulating the length of each cable to suit when it is inserted into the eyelet hook.

Our hanging kit includes spiral, 2m cable and eyelet hook.



Simple Range Options — Wall Panels



Installation

Ensure all wall surfaces to which the panel will be applied to are clean and dry.

Panels can be fixed to most surfaces including concrete, plasterboard and block work providing they are solid. Wallpaper should be removed. Gloss paint roughened. Emulsion paint brushed with a stiff brush. The panel is simply applied to the wall by using our impaling clips and Contact Spray adhesive.

2 impaling clips are used side by side for panels up to 1200mm x 1200mm larger than this will require 4 impaling clips.

Panels must be checked for colour shading differences, flaws, defects or damage prior to installation. Once installation has been commenced, the panels are deemed to have arrived in perfect condition – any of the above reported after installation will not be covered by your warranty.

Lightly trace the panel edges onto the desired installation area. Then suitably and securely fix the appropriate number of clips using screws. Spray contact adhesive vertically onto the panels reverse surface and horizontally onto the desired installation area.

Be sure to spray over the clips with the contact spray adhesive which should be applied to 100% of the surface area on both surfaces. After waiting for the adhesive to dry (2-5 minutes at 23°C) carefully align the panel to the marked area and push gently - allowing the clip spikes to bite into the panel. Once confident with the panel positioning, press firmly over the entirety of the surface and ensure maximum contact has been made with the wall



Technical Information



Cleaning

Light dirt marks can be removed by using proprietary spot cleaner. A small area should be tested first before doing the full panel to ensure that the fabric will not discolour from the cleaner.



Weight

40mm panels weight approx. 5 kg/m²



Fire Resistance

ProSound Simple Acoustic Panel have been tested to A2 - s1, d0